

# Collaborative Support for Technology in Teaching in the Flipped Classroom

# Academic Technology and Distributed Learning

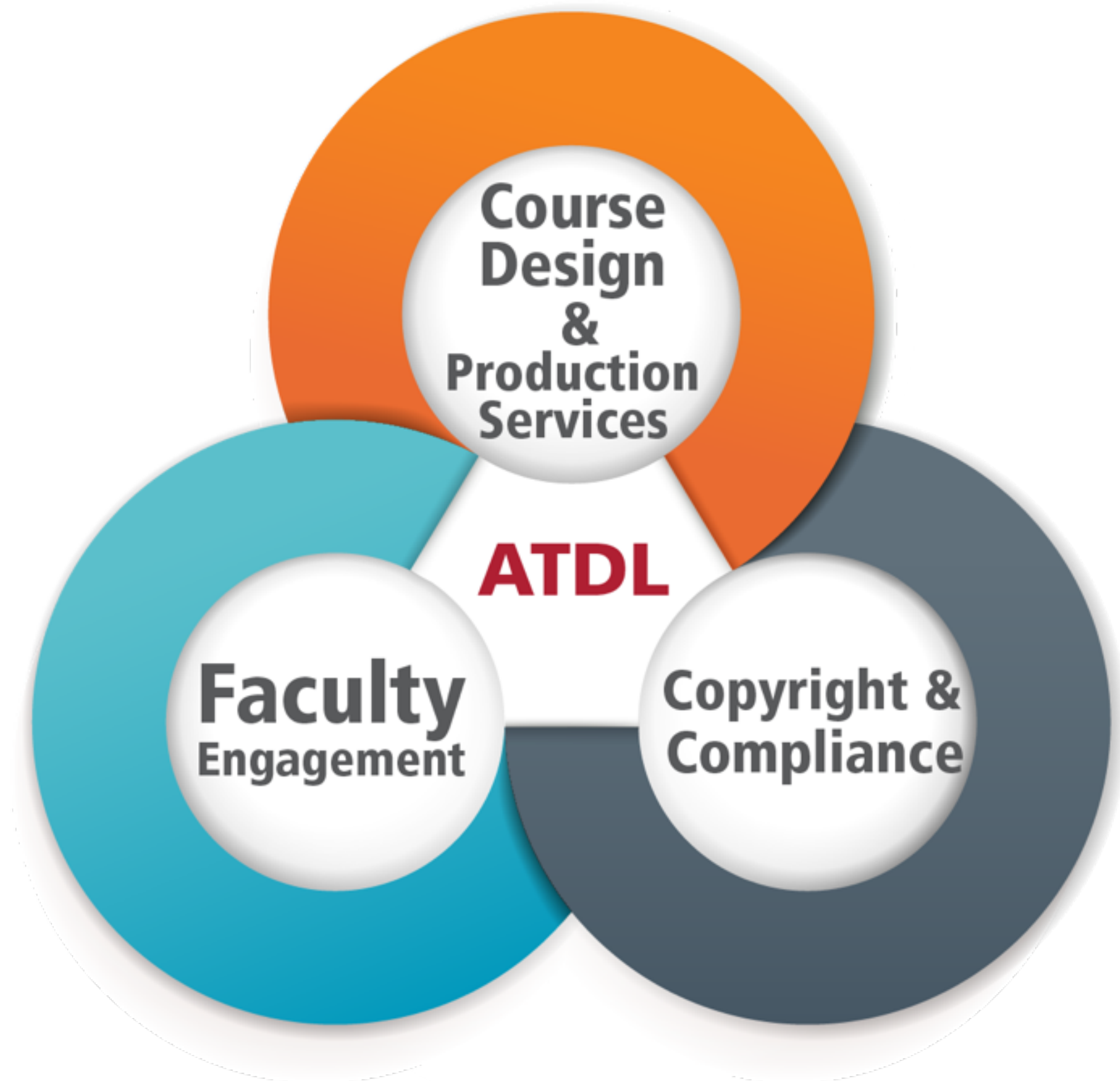
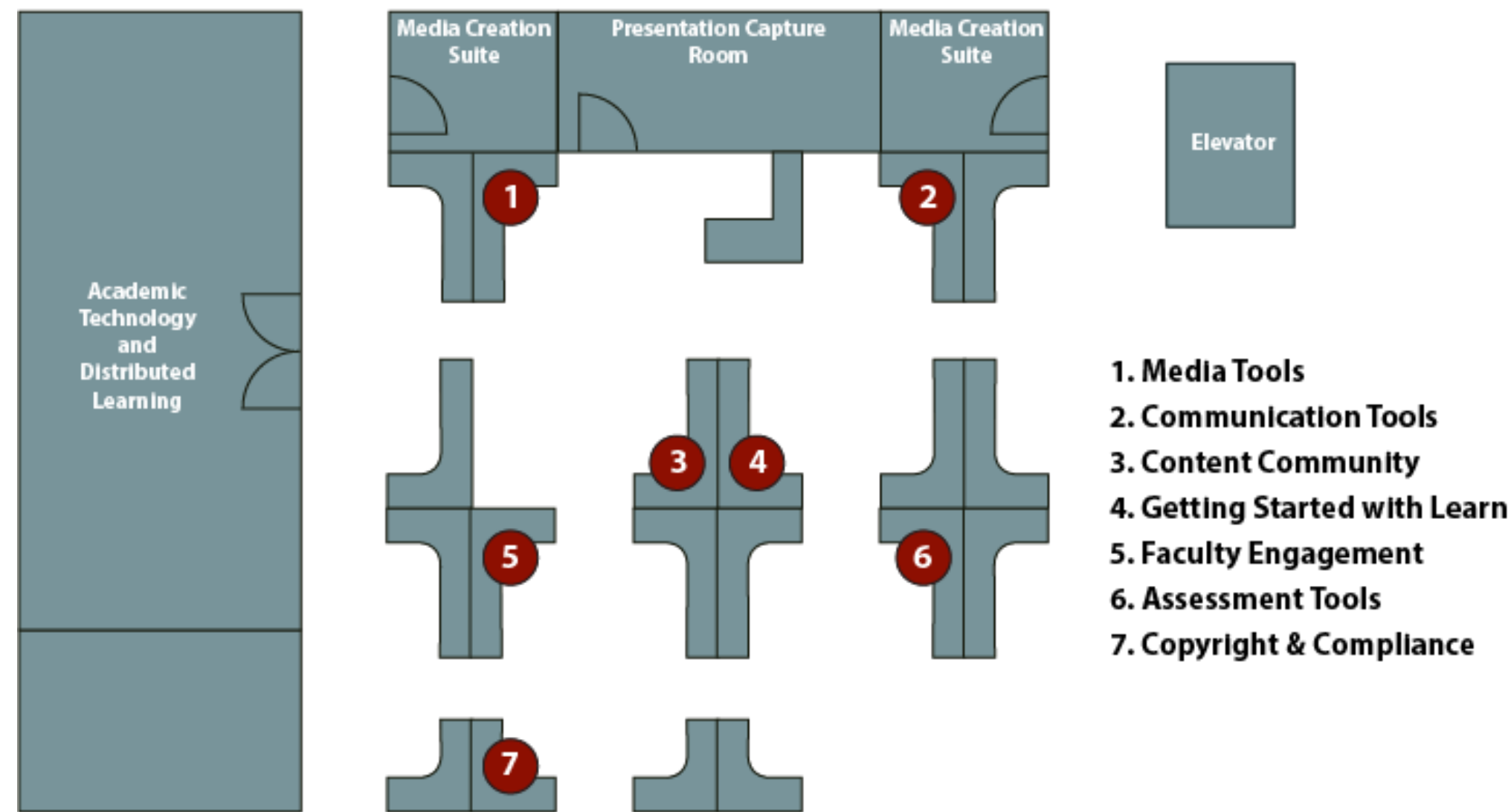
Promote and support the effective and innovative use of academic technologies to enhance teaching and learning, regardless of delivery mode.

# Academic Technology and Distributed Learning

Promote and support the **effective** and **innovative** use of academic technologies to enhance **teaching and learning**, **regardless of delivery mode.**

# Academic Technology and Distributed Learning

## Technology Resource Fair Participant Map



 **Teaching & Learning Forum**

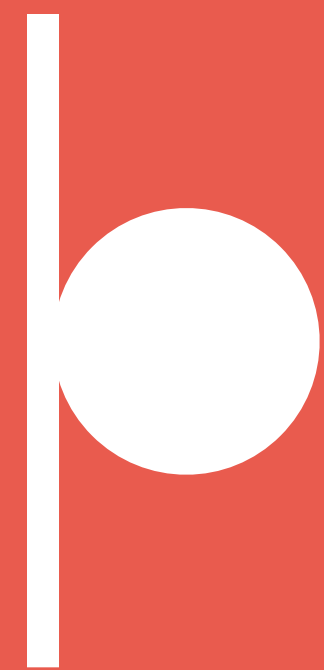
# Technology Innovation Fund

# The 3 Bears Approach





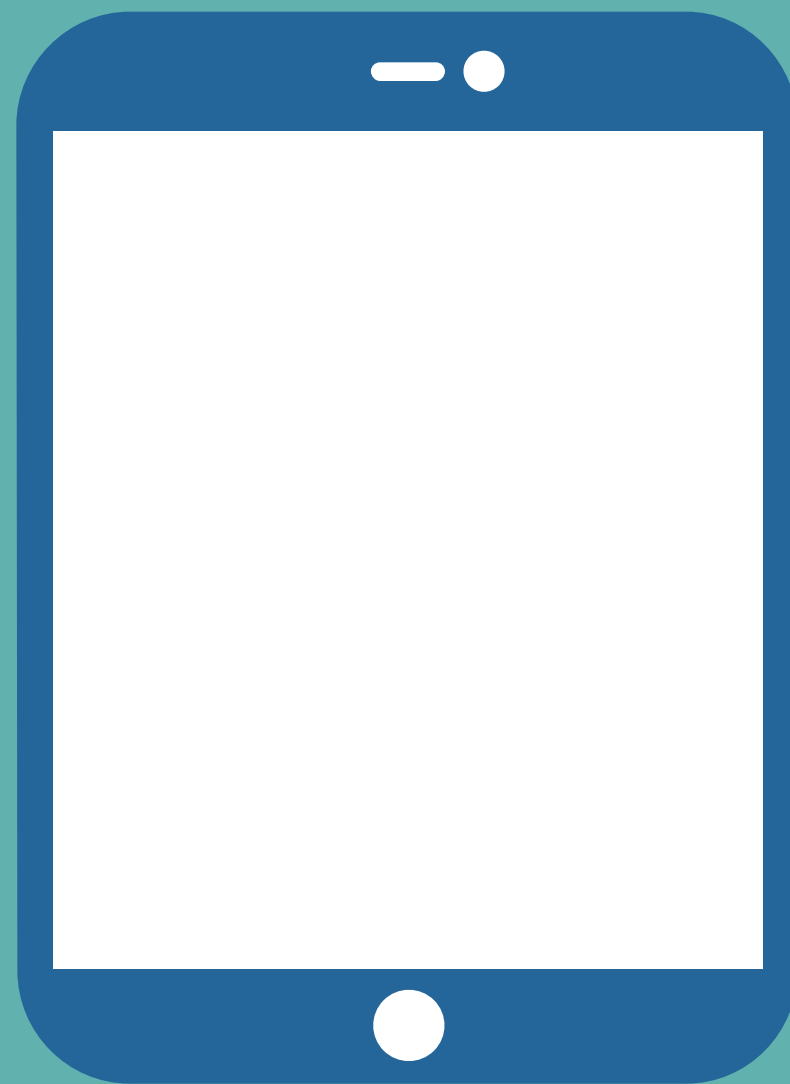
# Iterative Dialogue



SAINT JOSEPH'S UNIVERSITY

**live greater.**

# Technical Workshops



iPad  
Training



Storehouse  
Training



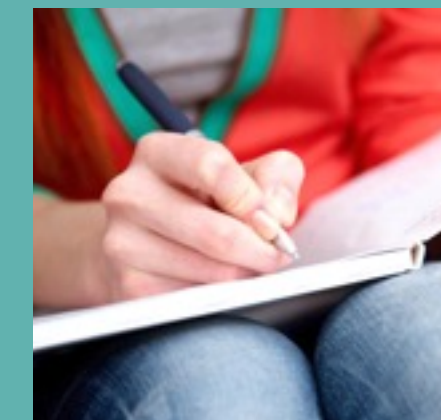
Photo/Video  
Tips & Tricks



# Creative Workshops

THE SETUP  
THE BODY  
THE CONCLUSION

Components  
of a Visual Story



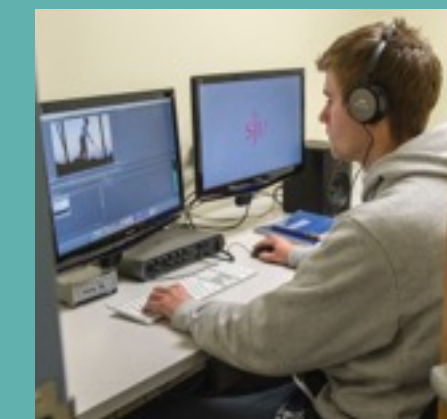
WRITER



PRODUCER



DIRECTOR

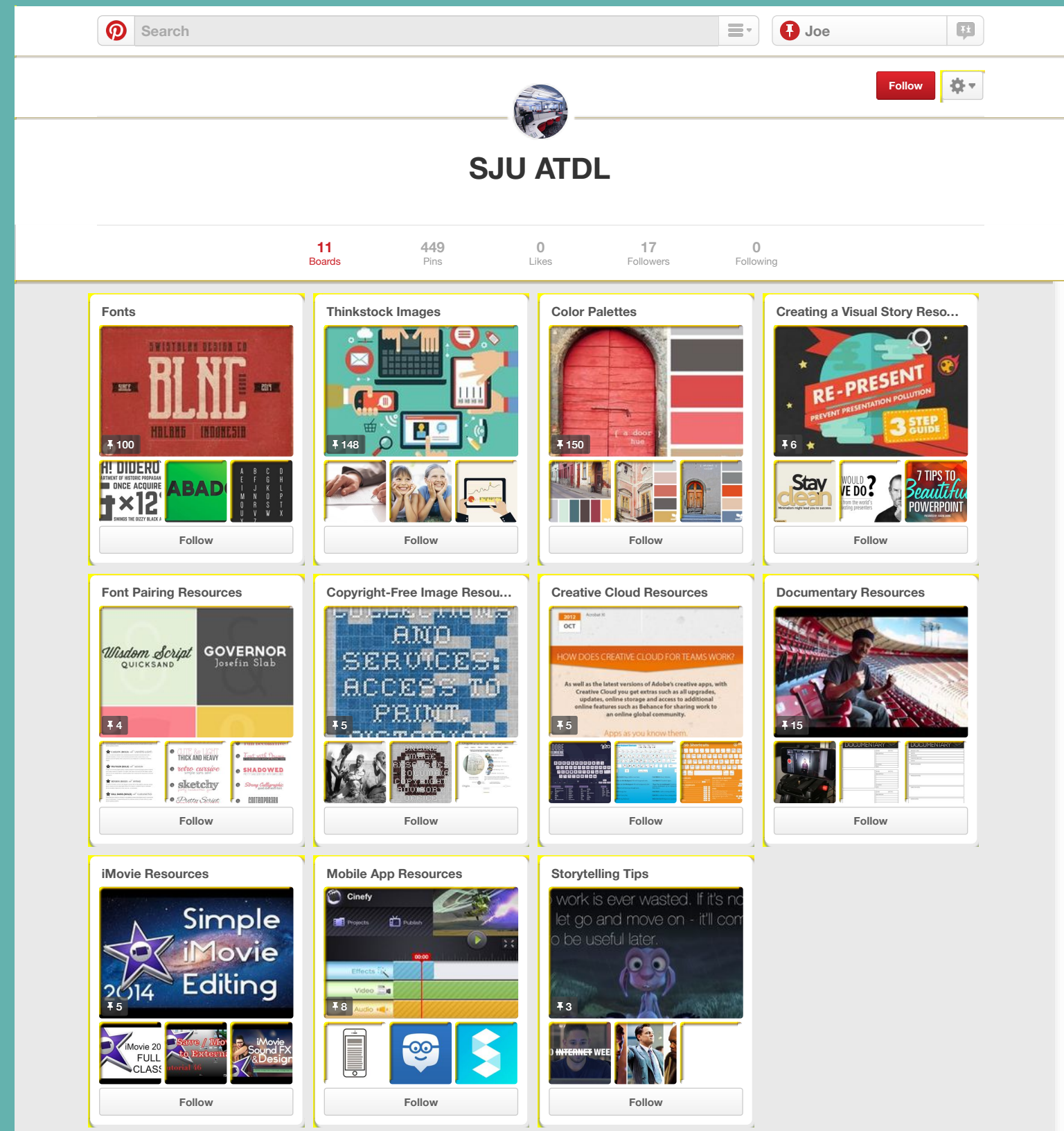


EDITOR

The Roles of  
Video Production

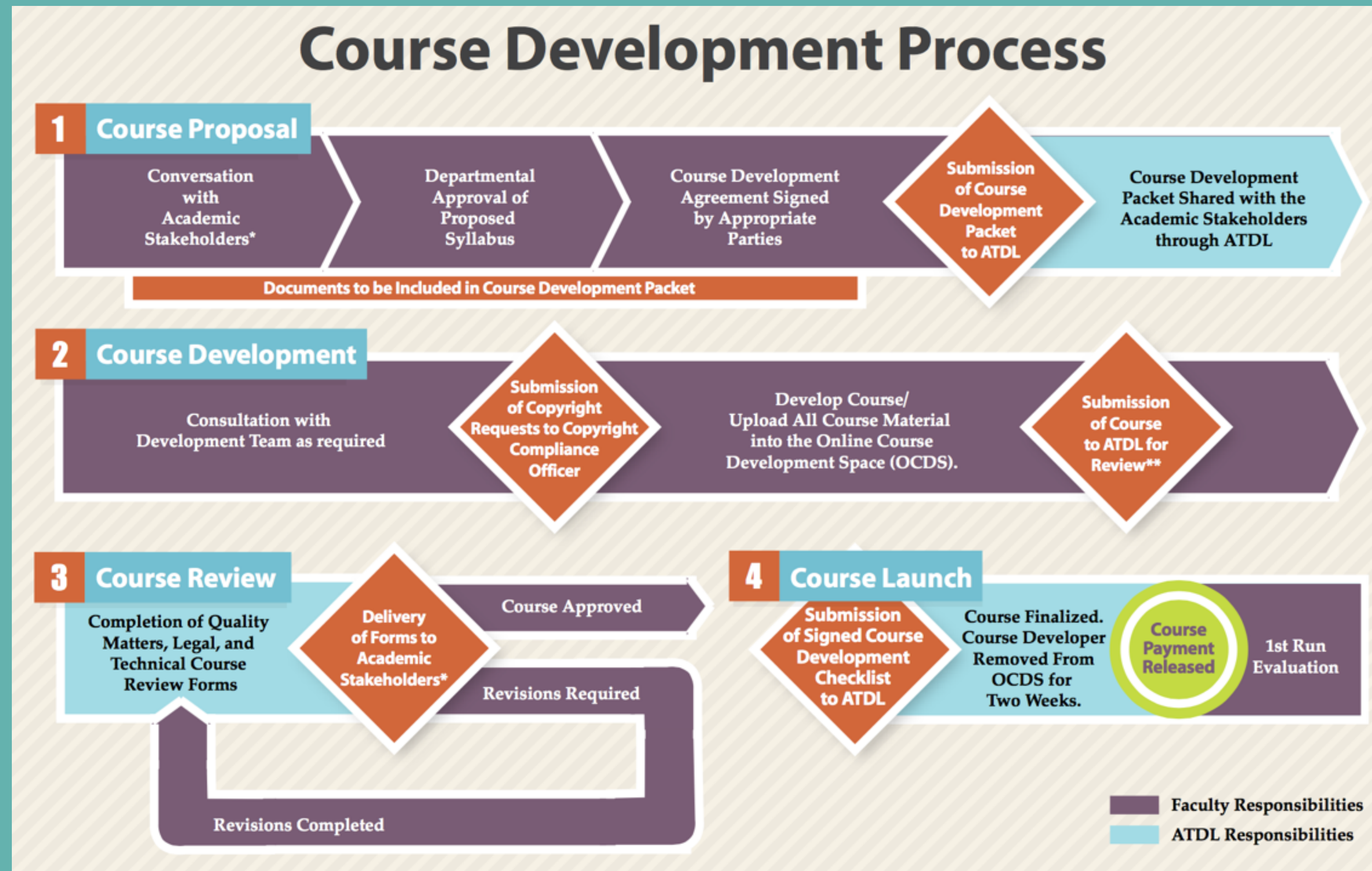


# Student Resources





# Online Collaboration





# Face-to-Face Collaboration



# KEY TAKEAWAYS

	Instructional Technologist	Faculty
Finding Each Other	Build <b>internal brand awareness</b> .	If you don't ask, <b>you'll never know</b> .
Be Flexible	Build <b>trust</b> .	Determine <b>pedagogical need</b> .
Bringing It Home	Use <b>just the right amount</b> and application of technology.	<b>Iterate and improve</b> continuously.



# THE TEAM

## Instructional Technology and Design Services



**Joe  
Montcalmo**  
Senior  
Director



**Stephanie  
Mosher**  
Instructional  
Technologist



**Chontel  
Delaney**  
Instructional  
Technologist



**Don  
Lowing**  
Production  
Manager



**Kathy  
Scarpato**  
Instructional  
Technologist



**Karen  
Pinto**  
Instructional  
Technologist



# Collaborative Support for Technology in Teaching in the Flipped Classroom



SAINT JOSEPH'S UNIVERSITY

**live greater.**